

Maple GO Station FEATURE PROJECT



Project Requirements

Built in 1903, the Maple GO Station is a heritage railway station originally constructed to handle increased rail traffic heading north. Today, major improvements are underway to prepare the station for future two-way, all-day GO Train service on the Barrie Line. This project consists of various railway corridor improvements for Metrolinx as part of the GO Expansion program.

Work includes renovating station amenities, building new platforms, connecting pedestrian tunnels, and improving accessibility to GO Transit services. It also includes modifications and upgrades to the existing rail corridor as an enabling works project to add a second track. Station improvements will feature a new west platform equipped with stairs, elevators, and tunnel modifications/access points, with associated pedestrian pathways and tunnel connections to the existing bus loop.

Site improvements include repaving all asphalt surfaces impacted by the station improvements and re-arranging the passenger pick-up and drop-off (PPUDO) area. We will install new electrical, mechanical, and gas services, and the station will have new bike storage facilities, sidewalks, and line painting to delineate bike, pedestrian, and vehicular traffic flow. New accessibility pathways and ramps will provide access for individuals with

mobility challenges, ensuring they can navigate the station without barriers.

"Improvements at Maple GO make it easier for customers to connect to transit, making transit a more appealing option for people to get to work and important destinations every day," said Bobby Thompson, Metrolinx Project Manager.

"With GO Expansion, service on the Barrie Line will increase in the future, and we are preparing for more capacity with station upgrades, including a new platform and second track."

Work began in February 2022 and will reach substantial completion in the summer of 2025. The station will remain open throughout construction.

Key Challenges

- Working within a live rail corridor
- Close proximity to a residential community
- Limited material movement and storage areas within the corridor
- Scheduling and coordinating 56-hour continuous shutdown while minimizing disruptions
- Long lead deliveries for rail-related components, e.g. 12-14 months

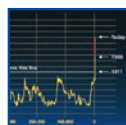
Roles & Responsibilities

Owner: Metrolinx
Consultant: 4Transit
Site Preparation, Excavation & Yard Piping: H & S Heavy Equipment
Site Servicing: King Cross Contracting Limited
Shoring: Green Infrastructure Partners Inc.
Concrete Reinforcement: Mansteel Rebar Ltd.
Concrete Formwork: Kenaidan Contracting Ltd.
Structural Steel: IBL Structural Steel Limited
Asphalt Paving & Concrete Curbs: Pave-It Limited
Landscaping: Lakeridge Contracting Ltd.
Precast Concrete Sound Barrier Wall: Anthony Furlano Construction Inc.
Drywall & Linear Metal Ceiling: Oakdale Drywall & Acoustics Ltd.
Steel Decking, Cladding & Glazing: Gage Metal Cladding Limited
Track & Signals: PNR Railworks Inc.
Corridor Raceway, Grounding & Bonding: Robert B. Somerville Co. Limited
Electrical: Net Electric Limited

Inside This Issue



FEATURE PROJECT
GTAA – Automated People Mover Concrete Structure Restoration



ENVIRONMENTAL UPDATE
What does Net Zero mean?



POINT OF INTEREST
Obayashi Group Company Meeting



GTAA – Automated People Mover Concrete Structure Restoration

FEATURE PROJECT

Project Requirements

The Terminal Link train is a free, accessible Automated People Mover (APM) system at Toronto Pearson Airport. It is a cable-driven passenger train on a 1.6 km elevated guideway linking Terminals 1 and 3 and Viscount Station, and it provides access to Pearson Station and the Union-Pearson Express train service. The APM system includes two fully automatic train systems with two distinct guideways and drive systems. A haul rope (cable) with required drive and return machinery units propels the trains. Both lines operate independently and have a total capacity of 2,180 passengers per hour per direction.

This project involved the concrete restoration and coatings of all the concrete support piers and pier caps for the inter-terminal APM. Damaged and deteriorated concrete was repaired and crack-injected before applying a concrete sealant. Old waterproofing from the tops of piers and around bearing pads was removed and replaced.

Many work areas, separated by construction fencing, were adjacent to or above pedestrian or public access ways. As such, we implemented public safety and environmental protection measures for many activities. For example, all

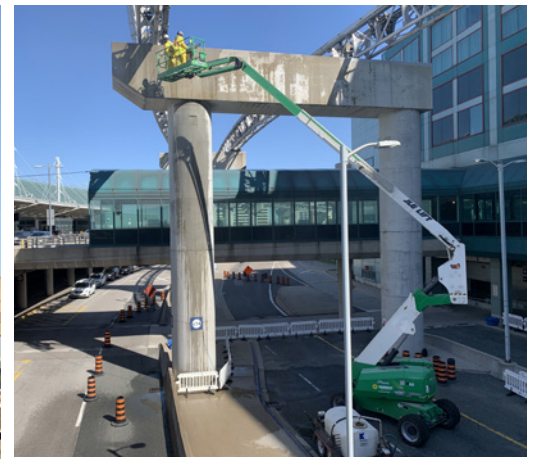
grinders were outfitted with vacuum shroud attachments to minimize dust generated from waterproofing removal and surface preparation activities.

The APM train runs 24 hours a day, seven days a week, transporting approximately 17,000 passengers and airport employees daily. Therefore, it is critical to the airport's functions and was operational during the restoration. We carefully planned and executed the work by separating activities into seven work zones, reducing the impact on passengers and traffic movements.

Construction began in the fall of 2022 and completed in August 2023.

Key Challenges

- Working in a busy airport environment
- Working around live rail (energized at 600 volts)
- Working at heights



Roles & Responsibilities

Owner:
Greater Toronto Airports Authority (GTAA)

Consultant: Entuitive

Automated People Mover System Maintainer:
Doppelmayr Cable Car Ltd. (DCC)

Concrete Restoration:
Huinink Infrastructure Ltd.

Waterproofing: Bothwell-Accurate Co. Inc.

Recently Awarded

**Bloor GO Station,
TTC Connection**

**Pitt Meadows
Civil Building and
Harris Road Park
Washroom Building**

Trillium Health Partners, M-Site Parking Garage Construction Management Services (Phase 1)

FEATURE CREW



Obayashi Group Company Meeting

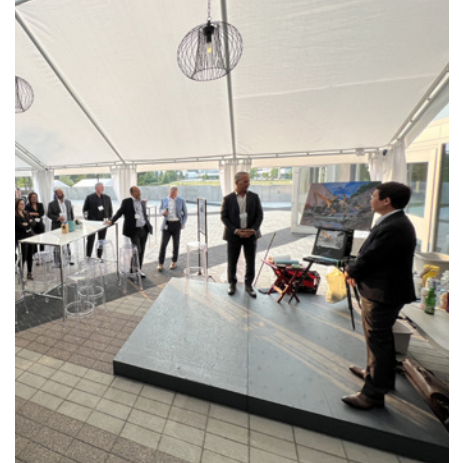
POINT OF INTEREST



Kenaidan was proud to be the host company for the 2023 Obayashi Group Company Meeting. The annual meeting brings together senior leaders from Obayashi's six North American affiliate companies with key staff from Japan and Obayashi's North American Headquarters for two days of information sharing and networking.

The opening reception, hosted at Kenaidan's head office on June 7, included a performance painting by award-winning Toronto-based artist Andrew Cheddie Sookrah. Over three hours, he created a vibrant artwork based on a construction progress photograph from the Weston Tunnel Grade Separation project, a Kenaidan and Obayashi joint venture. Our President, John Goffredo, presented the painting to Hiro Kato, President of Obayashi North America, at the end of the event.

On June 8, the group met in downtown Toronto to participate in various business improvement workshops. Following these sessions, Kenaidan organized tours to job sites at Exhibition GO Station, Ashbridges Bay Treatment Plant, and Trillium Health Partners Mississauga Hospital.



What does Net Zero mean?

ENVIRONMENTAL UPDATE



Aaraby Mohanathas,
Environmental, Health and
Safety Coordinator

In order to understand net zero, we have to understand climate change. To understand climate change, we need to understand what excess carbon emissions do to our atmosphere; this requires understanding the greenhouse effect. Here is a quick synopsis of the science and rationale behind the net-zero movement.

The Greenhouse Effect

Without our atmosphere, all the heat would leave the Earth, and the global temperature would be -22°C. Humans and most living things would not exist. Fortunately, our current atmosphere has greenhouse gas vapours, carbon dioxide, methane, and nitrous oxides that trap the heat within our atmosphere, creating the perfect average global temperature of 15°C, allowing humans and other life to thrive (NASA, 2023).

Excess Carbon Emissions

Since the industrial revolution in the mid-1800s, human activity has significantly increased the amount of greenhouse gases in the atmosphere, resulting in more trapped heat and an increase in global temperature (known as global warming). Human activities that release high amounts of greenhouse gases into the atmosphere include burning fossil fuels, changing land use, deforestation, manufacturing, and overconsumption (NOAA, 2019) (UN, nd).

Climate Change

In 2015, 196 parties around the world came together and signed the Paris Agreement, a legally binding international treaty on climate change. The purpose is to limit global warming to 1.5°C (therefore, 16.5°C global temperature), which means greenhouse gases in the atmosphere must decline by 43% by 2030 (UNFCCC, 2015). Examples of decreasing

emissions include reforestation, building using sustainable materials, and moving away from fossil fuel use.

Net Zero

Net zero refers to balancing the amount of greenhouse gases produced and the amount that is removed from the atmosphere. This can mean an entity releases zero carbon emissions, or the emitted carbon produced is equally offset. An example of offsetting is using technologies to capture carbon before it is released into the atmosphere. In a business sense, as governments start to mandate carbon disclosure and net-zero strategies and introduce penalties such as the carbon tax, it becomes increasingly more important to infuse net zero into business strategies.

At Kenaidan, we are assessing all our carbon emission outputs to understand our total current impact and how we can eliminate and offset our emissions to reach a net-zero target.

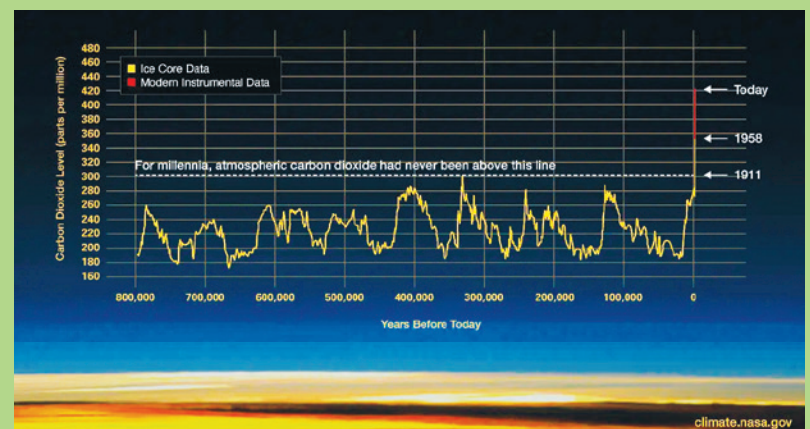


Figure 1: Annual data of carbon present in our atmosphere since the last ice age.
Source: <https://climate.nasa.gov/evidence/>

Our Company, Our People

ROAMING PHOTOGRAPHER



On June 15, Team Kenaidan hosted our annual Partnering Event, networking with clients, consultants, subcontractors, and suppliers.



In late June, employees at Kenaidan's 2023 Pool & Games Night had an incredible experience engaging with coworkers while playing fun games. They had a blast playing pool, air hockey, and darts, plus axe throwing, Skee-Ball, and so much more!



Chuck Lutz, Equipment Manager, recently presented three awards, a Construction Proficiency Award and two Trade Awards, to graduates from Bramalea Secondary School. The students will use the funds to support their academic and apprenticeship journeys to pursue careers in construction.

Aidan Flatley, Co-founder and Chairman, and John Goffredo, President, flipping burgers for the Farewell to Summer BBQ at our Head Office.



Kenaidan Welcomes

Riya Patel, Project Engineer
Tejas Patel, Quality Control Coordinator
Milad Zhian, Project Engineer
Aman Gandhi, BIM/ADC Coordinator
Anastasiia Voronina, Culture & Communications Coordinator
Darla Thompson, Health & Safety Advisor
Sadeem Bilal, Health & Safety Advisor
Christopher Murley, Project Engineer
Shagun Shrivastava, Quality Control Coordinator
Jennelyn Laguda, Project Administrator
Geris Khneisser, Mechanical & Electrical Coordinator

Sayed Bilal, Preconstruction Administrator
Monika Golda, Project Administrator
Samuel Sousa, I.T. Analyst

Congratulations To

Mark Guina on his promotion to I.T Team Lead and Security Architect

Corporate Sponsorships

Kenaidan recently sponsored:
• Stoney Creek Girls Hockey Association
• TNT Tornadoes Minor Hockey Association

Corporate Donations

Kenaidan recently made donations to:
• Memorial Bursary – University of Guelph
• Heart & Stroke Foundation
• Kids Up Front Foundation

Charitable Matching Program

Kenaidan has recently matched employee donations to the following charities:
• SickKids Hospital
• Covenant House Toronto

Contributing Editors:

Ben Alves, Herman Reinders, Dave Pimpinella, Aaraby Mohanathas, Marisa Nardini, Andrea Howson, Julie Dorie



Kenaidan's Mission Statement:

- To provide responsible, quality construction services utilizing superior innovation and expertise.
- To develop and maintain long-term relationships with satisfied clients and suppliers.
- To create a safe, challenging and enjoyable work environment where employees share in corporate growth and success.
- To build on a sound financial base where future development is promoted over short-term gain.



Kenaidan Contracting Ltd.

7080 Derrycrest Drive,
Mississauga, Ontario, Canada L5W 0G5
Telephone 905.670.2660

Kenaidan is a registered trademark of Kenaidan Contracting Ltd.

Kenaidan Contracting Ltd.

4311 Viking Way, Unit 240,
Richmond, British Columbia, Canada V6V 2K9
Telephone 604.270.7670